

exacqVision®

Cross Platform IP Video Surveillance Software and Systems



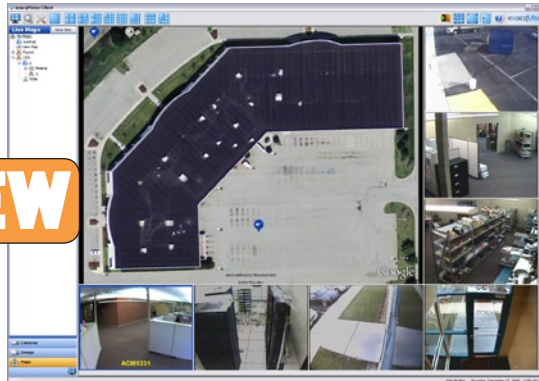
Flexible Scalability: Single Camera to Enterprise

exacq® • www.exacq.com • +1.317.845.5710
Technologies

- Easy to Install and Operate
- Fully Functional Windows, Linux & Mac Clients
- Server Software Runs on Windows and Linux
- Enhanced Web Server (Live and Recorded Video)
- Digital PTZ (Live & Recorded Video)
- Optical PTZ Camera Control (Analog and IP)
- Graphic Search Display
- Simple and Flexible IP Camera Licensing
- POS/ATM Text Insertion Search
- Event Search & Event Monitoring
- Pre/Post-alarm Recording
- Smart Search
- Virtual Matrix
- Multi-Monitor (video wall)
- Multi-Camera Playback & Export
- exacqRecall Single Button Export
- exacq Replay Quick Convenient Playback
- Analog & IP Cameras on One Interface
- Supports Megapixel and H.264 Cameras
- Megapixel Camera Cropping
- Covert Cameras
- Sensitivity Settings
- Selectable Frame Rate
- Privacy Block
- Simple Mapping
- Enterprise Multi-Level Mapping
- LDAP / Active Directory
- Enterprise User Setup



exacqVision client for Mac



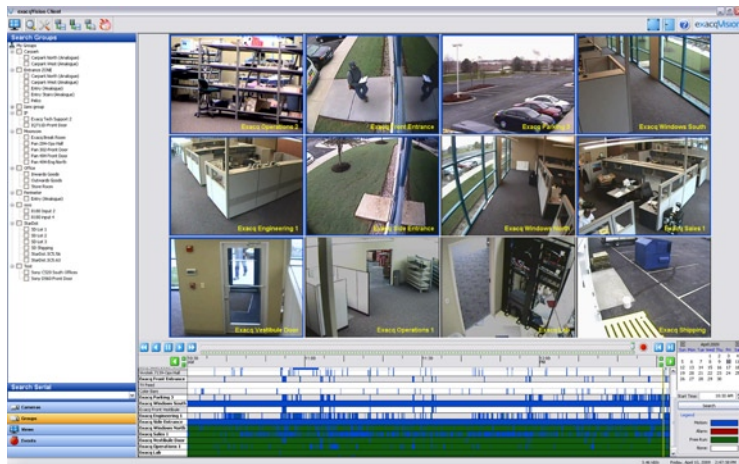
NEW

New mapping feature on exacqVision client

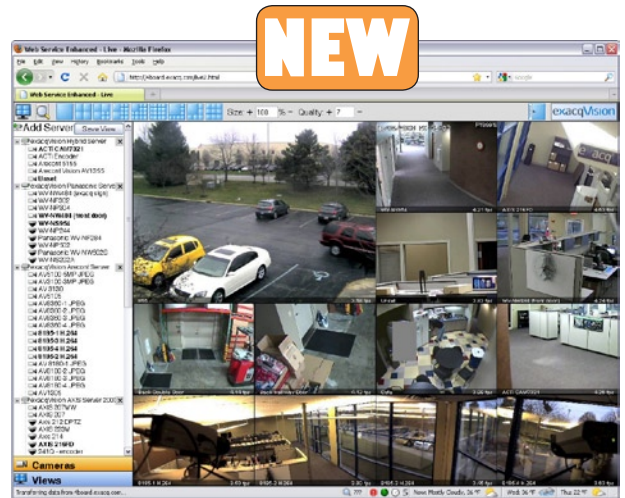


Powerful Searching

Search for and view video from multiple cameras across multiple exacqVision servers simultaneously. Scrub bar easily moves back and forth through recorded video. Use Smart Search to quickly find specific video. Export the entire clip just as it appears as a self executable file that will open on any PC without the need to download software.



Multi-camera recorded video on client software (Windows/Linux/Mac).



NEW

Live view on new Enhanced Web Service (any browser)

Browser Compatibility



Mobile Compatibility (browser)



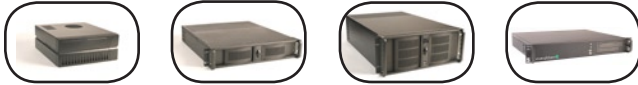
Client Compatibility



Build your exacqVision Video Management System using any combination of the following servers:

exacqVision Hybrid Servers

factory installed, windows & linux, analog & IP cameras



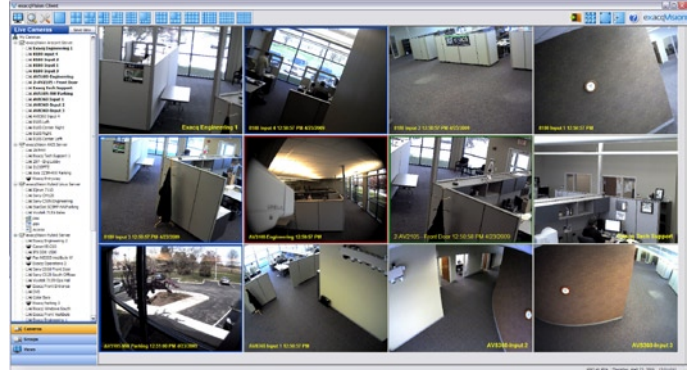
exacqVision IP Camera Servers

factory installed, windows & linux, IP cameras



Commercial Off-The-Shelf Servers

COTS solution, windows & linux, IP cameras



Administrate all of your servers with the free included exacqVision Client software running on a Windows, Linux or Macintosh computer.



2U Rackmount
exacqVision Hybrid NVR Server



2U Rackmount
exacqVision IP Camera iSCSI NVR Server

HARDWARE FEATURES

- Hybrid Systems (analog & IP Cameras on a Single Server)
- Flexible Scalability: Single Camera to Enterprise
- Up to 16TB Storage Capacity Per Server
- Up to 128 Channels Per Server (64 Analog/64 IP)
- Factory Installed exacqVision Software and OS
- Three-Year Warranty on All exacqVision Servers
- One-Year Free Software Upgrades
- DVD/RW Drive on All Systems
- Simple & Flexible IP Camera Licensing--Not Tied to IP Camera MAC Address
- Easy to Use Software With Powerful Features
- Phone and Online Technical Support
- RAID-5 Available on 4U Servers
- iSCSI Storage Integration

exacqVision^{EL}

Low Cost, Energy Efficient Hybrid Appliance



- True hybrid server
- Embedded Linux on Solid-State Drive
- 16 Analog Inputs Per Server
- Up to 24 IP Cameras Per Server



- Compact, Sturdy 1.5 U Rackmount Chassis
- Highly Energy Efficient
- Fully Compatible With All exacqVision Systems



	exacqVision Hybrid NVR Servers				exacqVision IP Camera Servers		
	Mini Desktop 4 or 16 analog Up to 64 IP (includes 8)	2U Rackmount 16 or 32 analog Up to 64 IP (includes 8)	4U Rackmount 16,32,48 and 64 analog Up to 64 IP (includes 8)	exacqVision EL 16 analog Up to 24 IP	Mini Desktop Up to 64 IP Cameras	2U Rackmount Up to 64 IP Cameras	4U Rackmount Up to 64 IP Cameras
Max. Storage Capacity	4 TB	6 TB	16 TB	2 TB	4 TB	6 TB	16 TB
RAID-5 Option			✓				✓
Removeable Hard Drives			✓				✓
IP Inputs	8 included (Up to 64)	8 included (Up to 64)	8 included (Up to 64)	Up to 24	Up to 64 or more	Up to 64 or more	Up to 64 or more
Analog Inputs	4 / 16	16 / 32	16 / 32 / 48 / 64	16			
Looping outputs	0	16 / 0	16 / 0 / 0 / 0	0			
MUX Analog Output	✓	✓	✓	✓			
Max. Analog IPS (NTSC)	120 / 480	120 / 240 / 480 / 960	480 / 960 / 1440 / 1920	120 / 480			
Max. Analog IPS (PAL)	100 / 400	100 / 200 / 400 / 800	400 / 800 / 1200 / 1600	100 / 400			
NIC Configuration	1 Gb (2nd is Optional)	1 Gb (2nd is Optional)	1 Gb (2nd is Optional)	1 Gb	1 Gb (2nd is Optional)	1 Gb (2nd is Optional)	1 Gb (2nd is Optional)
DVD/RW Drive	✓	✓	✓	✓	✓	✓	✓
Redundant Power Supply			Optional			Available on iSCSI unit	Optional
System Watchdog	✓	✓	✓	✓			
Audio Inputs	1 (+IP Cameras)	4 (+IP Cameras)	4 / 8 / 1 / 1 (+IP Cameras)	4 (+IP Cameras)	Camera Defined	Camera Defined	Camera Defined
Alarm Inputs	8	16	Up to 16	4			
Alarm Outputs	1	16	Up to 32	3			

SOFTWARE FEATURES	Standard Server Software	Enterprise Server Software NEW
Bandwidth Throttling	✓	✓
Server OS Compatibility	Windows/Linux	Windows/Linux
Free Client Software (Windows/Linux/Mac)	✓	✓
Multi-camera Playback	✓	✓
Analog PTZ Control & Presets	✓	✓
Digital PTZ Control & Presets	✓ (Live Video and Recorded Video)	✓ (Live Video and Recorded Video)
Event Notification	SMS (text messages & e-mail)	SMS (text messages & e-mail)
DVD Export	✓	✓
Video Loss Notification	✓	✓
Event Linking	✓	✓
Graphic Search Display	✓	✓
POS/ATM Text Insertion Search	✓	✓
SmartSearch	✓	✓
Event Search & Event Monitoring	✓	✓
Multi-Monitor / Video Wall Display	✓	✓
Virtual Matrix	✓	✓
exacq Recall Single Button Export	✓	✓
exacq Replay	✓	✓
Enhanced Web Server	✓	✓
Mapping	✓	✓ Multi-Level
LDAP / Active Directory		✓
Enterprise User Setup		✓

IP Camera Integration

Access Control Integration